

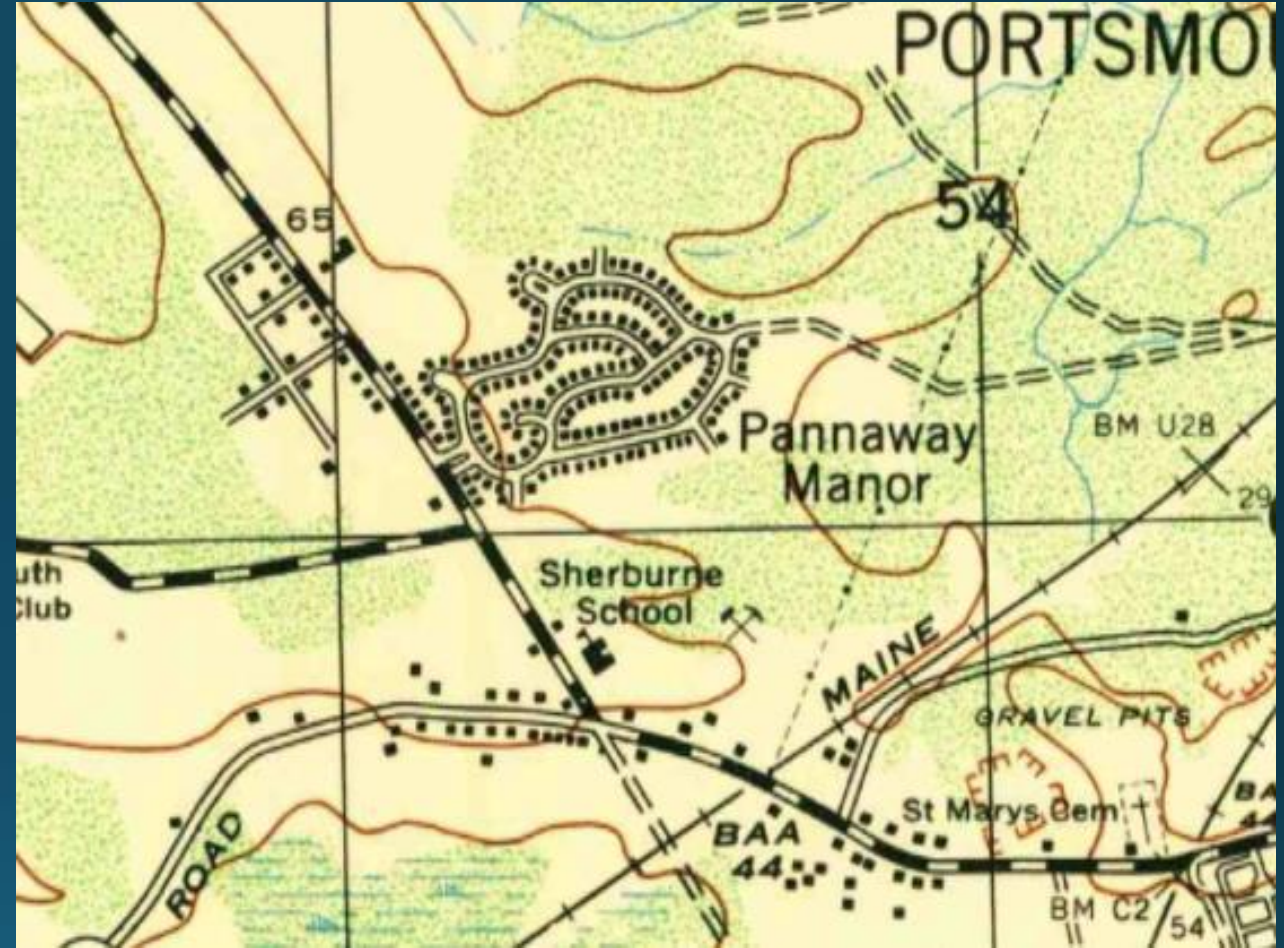
Pannaway Manor Sidewalk Reconstruction Public Meeting

*March 9th, 2022,
City Hall Conference Room A*

Portsmouth Department of Public Works

Pannaway History

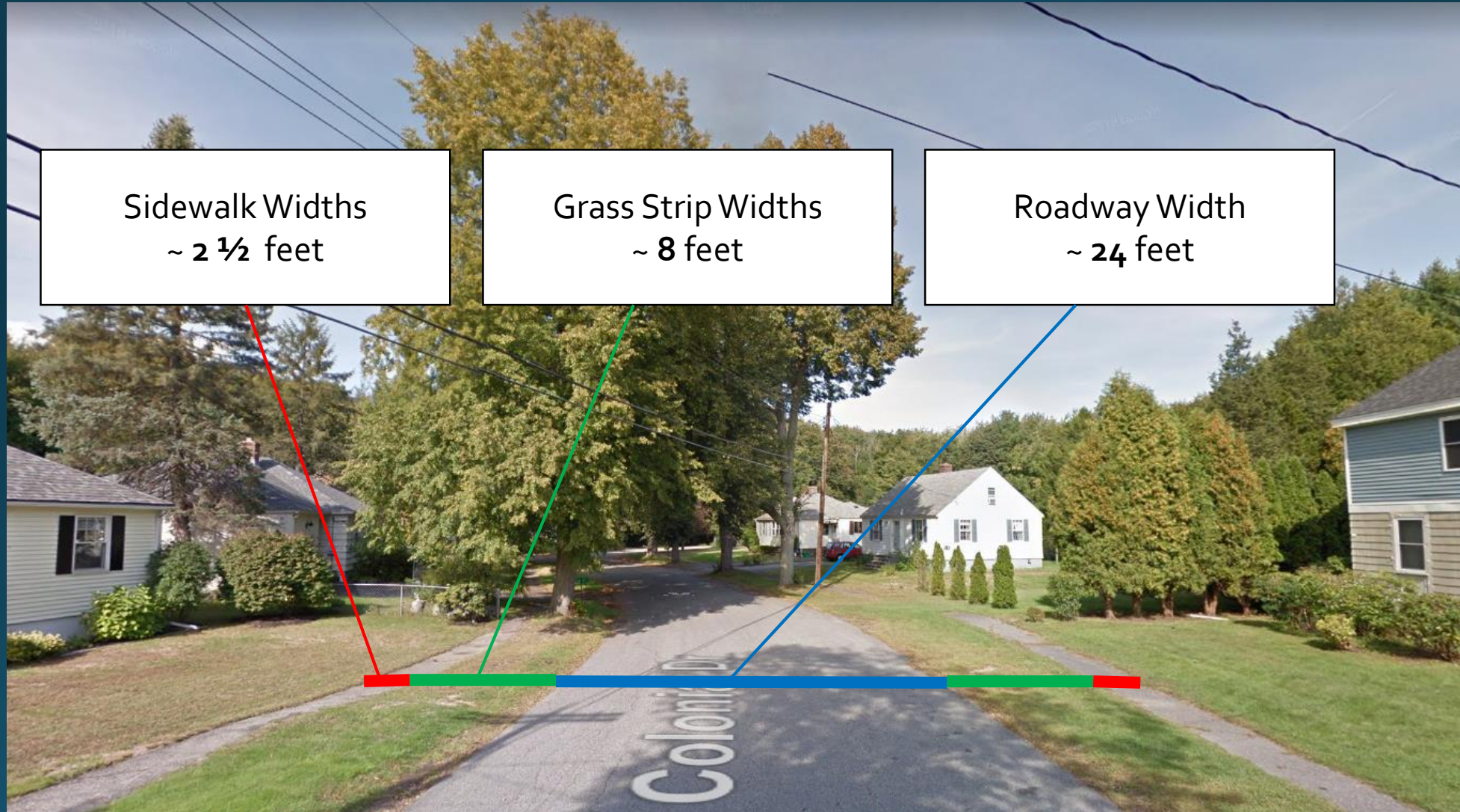
- Built in 1940's by the Defense Homes Corp.
- 2001 Sewer Separation and Repaving



Current Sidewalk Locations

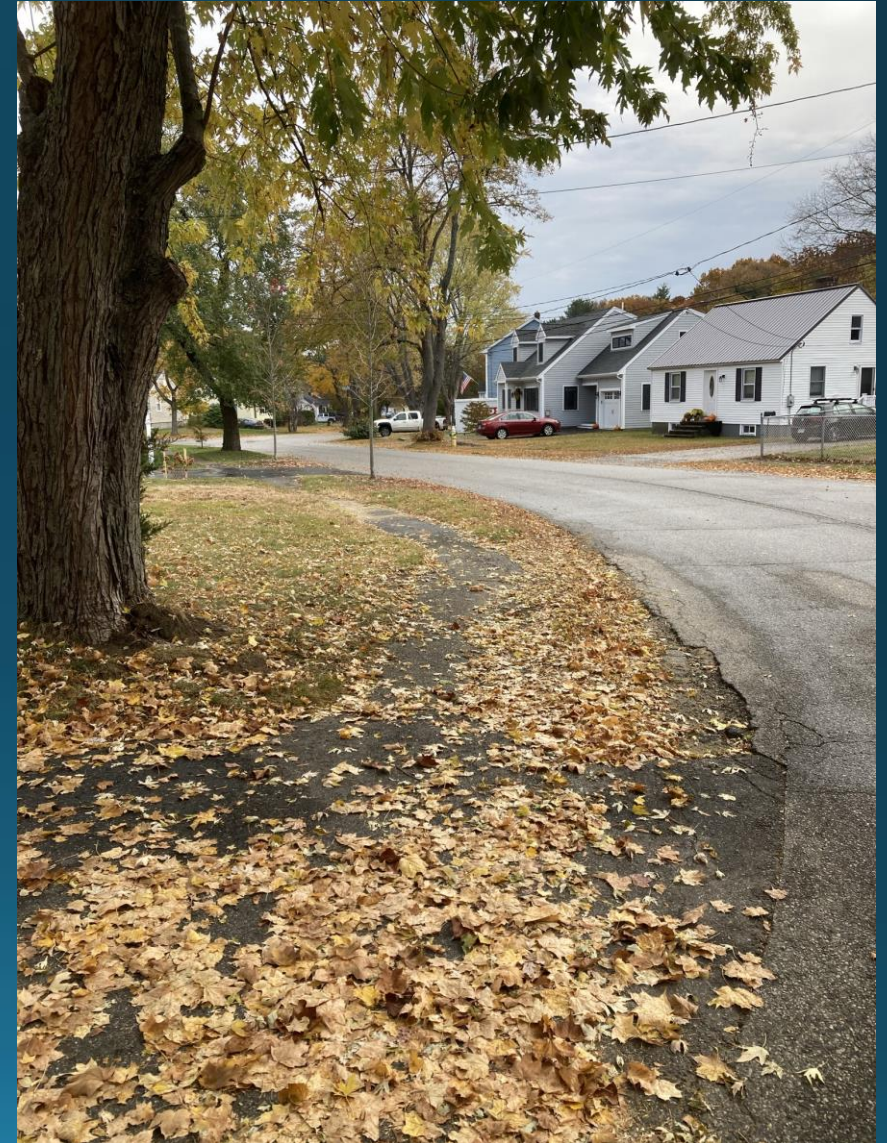


General Roadway Cross Section



Current Sidewalk Conditions

- ~2 ½ Feet Wide
- Asphalt
- Heaved by Tree Roots
- Moss / Soil Covered
- Poor Sidewalk Drainage



Current Sidewalk Conditions



Survey Results

- **Majority Confirmed that Sidewalks are in Poor Condition**
- **Poor Condition of Sidewalk Impacts Usage**
- **90% of Respondents Favored Improved Sidewalks**

Proposed Upgrades

- 5 ½ Feet Wide
- Americans with Disabilities Act (ADA) Compliant
- Concrete



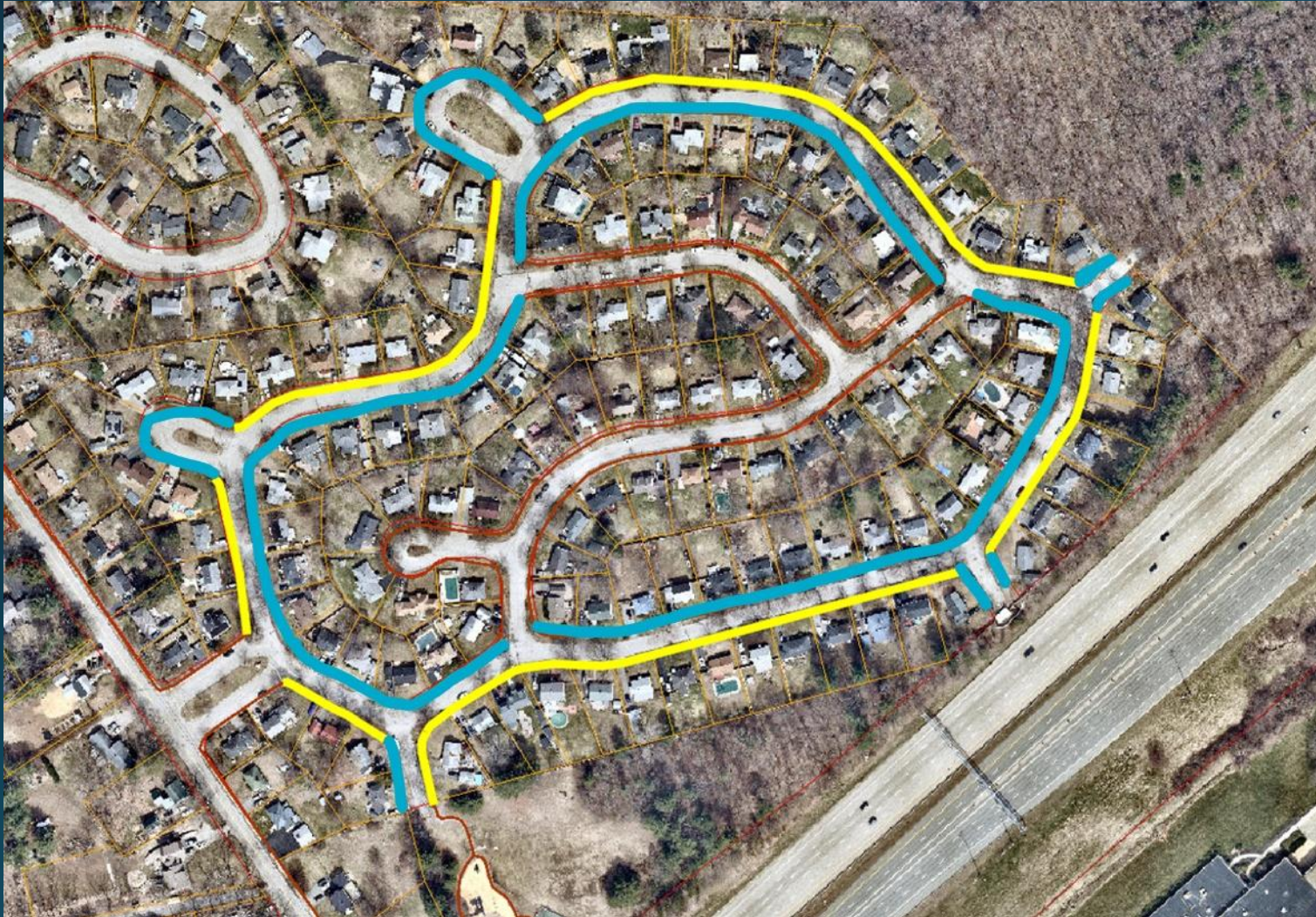
Considerations for Proposed Layout

- Impact the Fewest Number of Trees
- Maximize Number of Houses with Replaced Sidewalks
- Walkability Throughout Entire Neighborhood
- Available Funding

Proposed Work for Phase 1

Approx. 3,670
Linear Feet of New
Concrete Sidewalk

Remove Redundant
Sidewalk on
Opposite Side



Legend

New Concrete Sidewalks : 

Remove Existing Sidewalks : 

Proposed Future Work for Phase 2



Approx. 1,500 Linear Feet of New Concrete Sidewalk

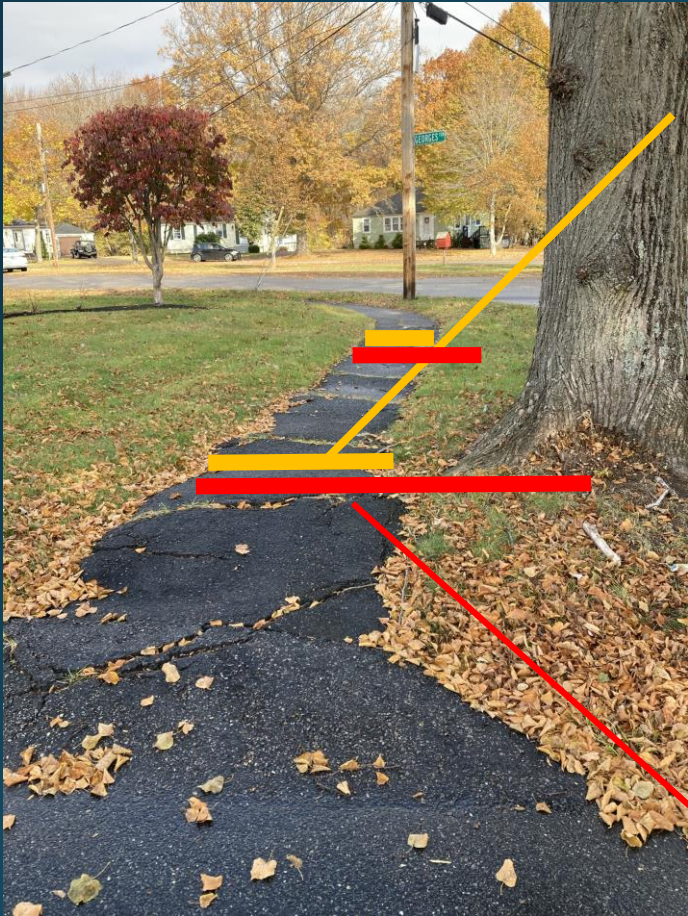
Remove Redundant Sidewalk on Opposite Side

Legend

New Concrete Sidewalks : 

Remove Existing Sidewalks : 

Sidewalk Placement



Existing Sidewalk:
2 ½ feet wide

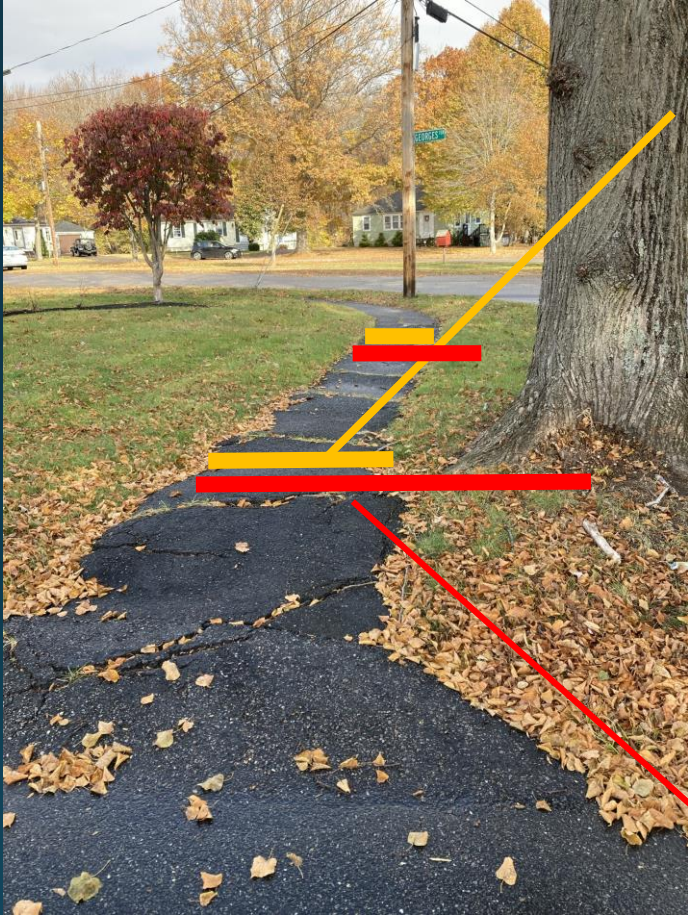
New Sidewalk:
5 ½ feet wide

2 ½ feet wide

5 ½ feet wide



Tree Impacts



Existing Sidewalk:
2 ½ feet wide

New Sidewalk:
5 ½ feet wide

Tree Would Necessitate Removal



2 ½ feet wide

5 ½ feet wide

Tree May Necessitate Removal

Tree Impacts

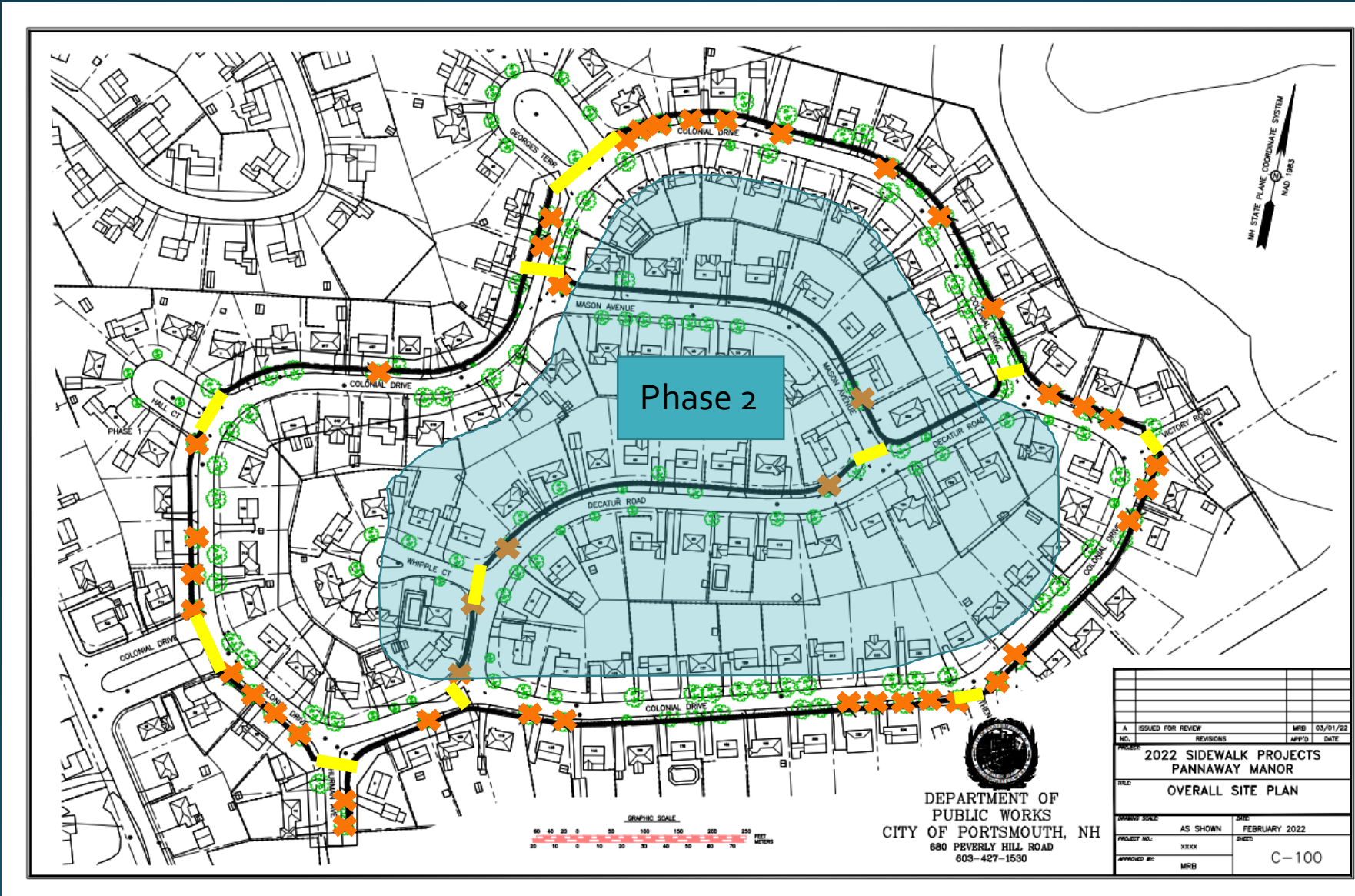


Method to Avoid
Tree Removal



Proposed Design Plan

Crosswalk (TYP) 



Advisory Pedestrian Shoulders

**Alternative to
Avoid Tree Impacts**

- No Effect to Trees
- Removal of Existing Sidewalks
- No Physical Protection From Traffic



Next Steps

- **Public Input**
 - **Complete Preliminary Design**
 - **Tree and Public Greenery Committee**
 - **Finalize Design**
 - **Advertise bids**
-
- **Anticipated Phase 1 Construction in Summer / Fall 2022**

Public Input

